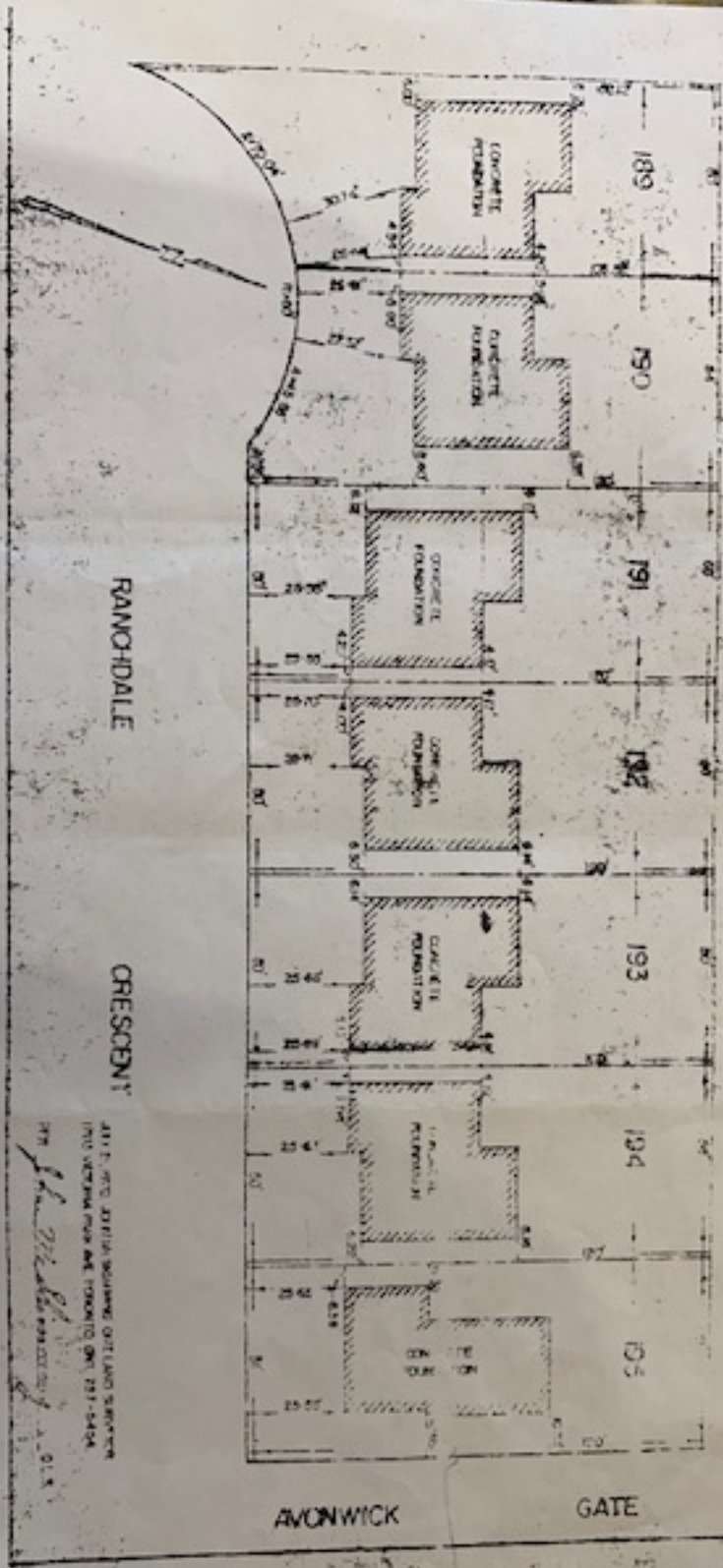


200 SULLY ST.
TORONTO, ONT.
CONTRACT NO. 100

PLAN OF SURVEY OF
LOTS 189 TO 195 PLAN M-1242
LAND TITLES OFFICE TORONTO
BOROUGH OF NORTH YORK
Scale 1" = 100'



RANDDALE

CRESCENT

AVONWICK

GATE

431 E. 470' 0\"/>